



Quick Tip for Year-End Closing

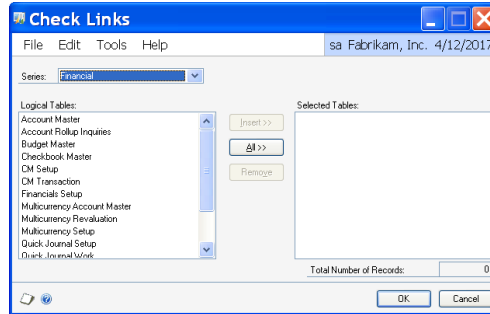
Save time and Consulting Dollars on Year-End Closing

Prior to performing your own Year-End Closing, or before you have Borek Business Solutions log in to assist you, make sure to run full Check Links & perform Reconcile for each of your companies and modules (AP, AR, GL, etc).

This will take some time and may best be performed during one of the few remaining weekends or evenings before the year ends.

...and...**MAKE BACKUPS FIRST!**

Email us for any assistance you may need or request this year's checklists and tips for Microsoft Dynamics GP Year-End Closing.



Support: 888-295-6120 & Option 2
Office: 541-345-3883 Option 3 for direct extensions.
Email: News@BorekBusinessSolutions.com



Quick Tip for Year-End Closing

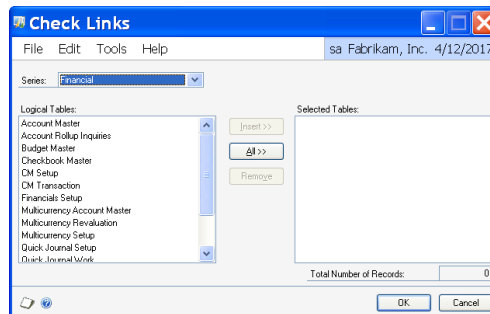
Save time and Consulting Dollars on Year-End Closing

Prior to performing your own Year-End Closing, or before you have Borek Business Solutions log in to assist you, make sure to run full Check Links & perform Reconcile for each of your companies and modules (AP, AR, GL, etc).

This will take some time and may best be performed during one of the few remaining weekends or evenings before the year ends.

...and...**MAKE BACKUPS FIRST!**

Email us for any assistance you may need or request this year's checklists and tips for Microsoft Dynamics GP Year-End Closing.



Support: 888-295-6120 & Option 2
Office: 541-345-3883 Option 3 for direct extensions.
Email: News@BorekBusinessSolutions.com